

Laryngectomy Patient



**DO NOT intubate
from above!**

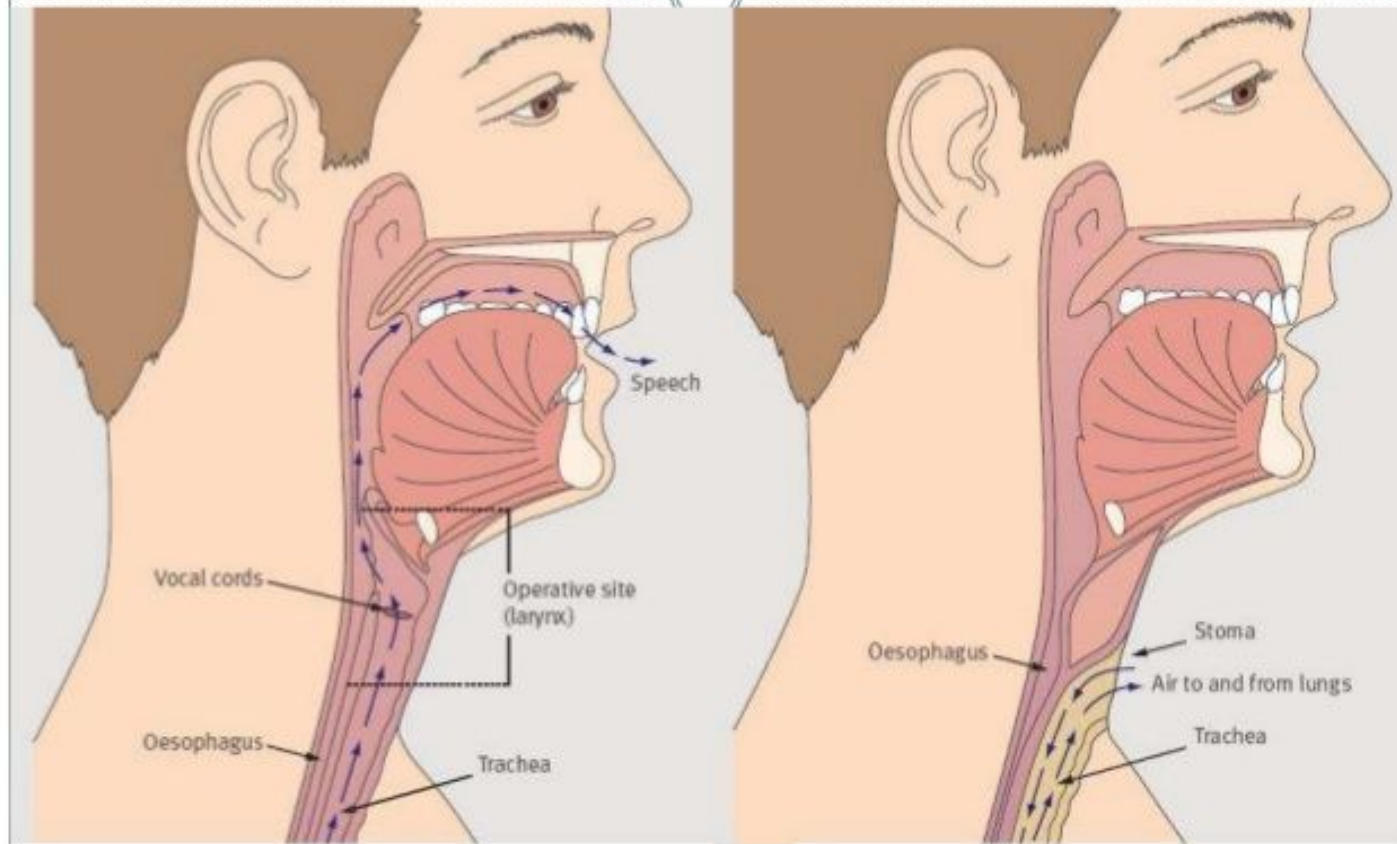


Must have Ambu
bag and
neonatal mask
at bedside at all
times!

***Stoma is the
only airway***



Before and After Total Laryngectomy





LaryTube:

- Soft silicone laryngectomy tube that maintains the opening of the stoma & holds HME in place
- **DO NOT** throw it away
- Secure around neck with trach ties
- Clean every 12 hours or as needed
- Okay to suction through LaryTube
- Clean with soap, water, and designated brush



HME (Heat-Moisture Exchange) System:

- Filter that is placed into the LaryTube
- Makes the air you breathe more humid – it's your “new nose”
- Change twice daily (8am, 8pm) or as needed (e.g., if clogged with mucus); throw old one out
- Remove to cough, then put back
- Remove if any trouble breathing
- **DO NOT** put external humidification on top of HME (e.g., mist mask)
- **DO NOT** wash/rinse the HME; it is disposable